

A three-story red brick building with a central entrance and a green lawn in front. The building has multiple windows, some of which are white-framed. A tree with yellow blossoms is on the left side of the image. The sky is blue with some clouds.

**Shaw  
& Co**  
ESTATE  
AGENTS

**£325,000**  
**Memorial Close**  
Hounslow, TW5 0LN

**Shaw  
& Co**



## PROPERTY SUMMARY

A nicely presented two bedroom ground floor flat situated In Memorial Close, Heston. The property offers a bright and comfortable living space, featuring a modern fitted kitchen and wooden flooring throughout adding a clean and contemporary feel.

Both bedrooms are good sized, making the flat ideal for professionals, couples or small families. Residents also benefit from well maintained communal gardens. Conveniently located, the property is within easy reach of great transport links as well as a variety of local shops and reputable schools making it highly practical location.

An ideal opportunity for buyers or investors alike. Contact us today to secure your viewing slot.

Tenure: Leasehold 943 Years

Annual Ground Rent: TBC

Annual Service Charge: £1,244.77

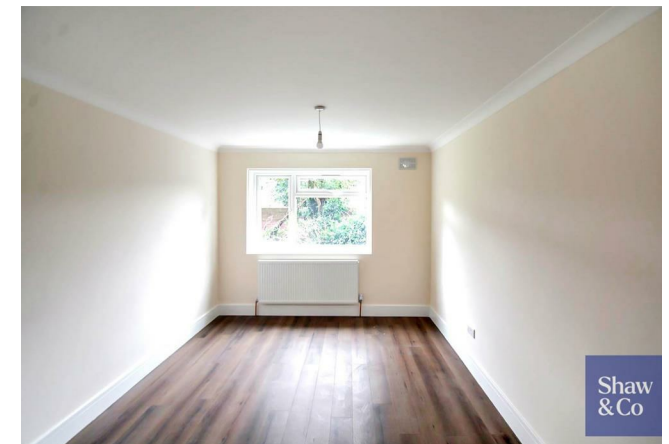
2



1



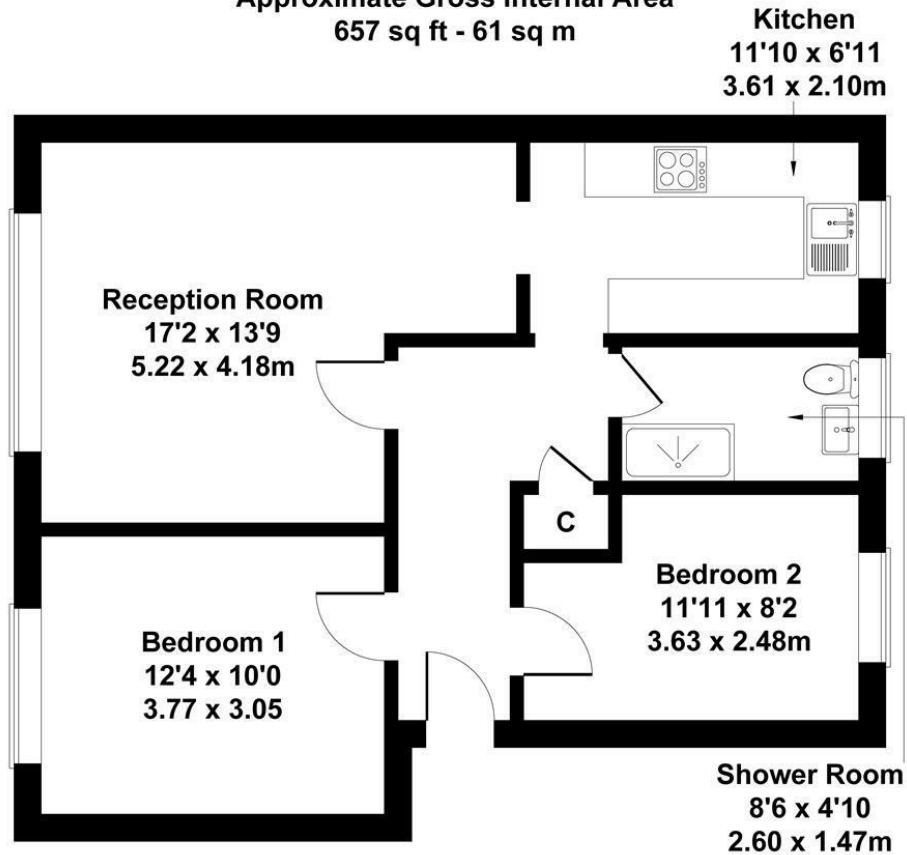
1





# Memorial Close, Heston

Approximate Gross Internal Area  
657 sq ft - 61 sq m



Not to Scale. Produced by The Plan Portal 2026  
**For Illustrative Purposes Only.**

**Shaw  
& Co**

**LOCAL AUTHORITY**  
Hounslow London Borough Council

**TENURE**  
Leasehold

**COUNCIL TAX BAND**  
C

**VIEWINGS**  
By prior appointment only

Energy Efficiency Rating		
	Current	Potential
Very energy efficient - lower running costs		
(92 plus) <b>A</b>		
(81-91) <b>B</b>		
(69-80) <b>C</b>		
(55-68) <b>D</b>		
(39-54) <b>E</b>		
(21-38) <b>F</b>		
(1-20) <b>G</b>		
Not energy efficient - higher running costs		
<b>England &amp; Wales</b>	EU Directive 2002/91/EC	



Agents Note: Whilst every care has been taken to prepare these particulars, they are for guidance purposes only. All measurements are approximate and are for general guidance purposes only and whilst every care has been taken to ensure their accuracy, they should not be relied upon and potential buyers/tenants are advised to recheck the measurements

**Shaw  
& Co**  
ESTATE  
AGENTS

**OFFICE ADDRESS**  
10 Central Parade  
New Heston Road  
Heston  
Middlesex  
TW5 0LJ

**OFFICE DETAILS**  
0208 570 7258  
heston@shawandcoestates.com